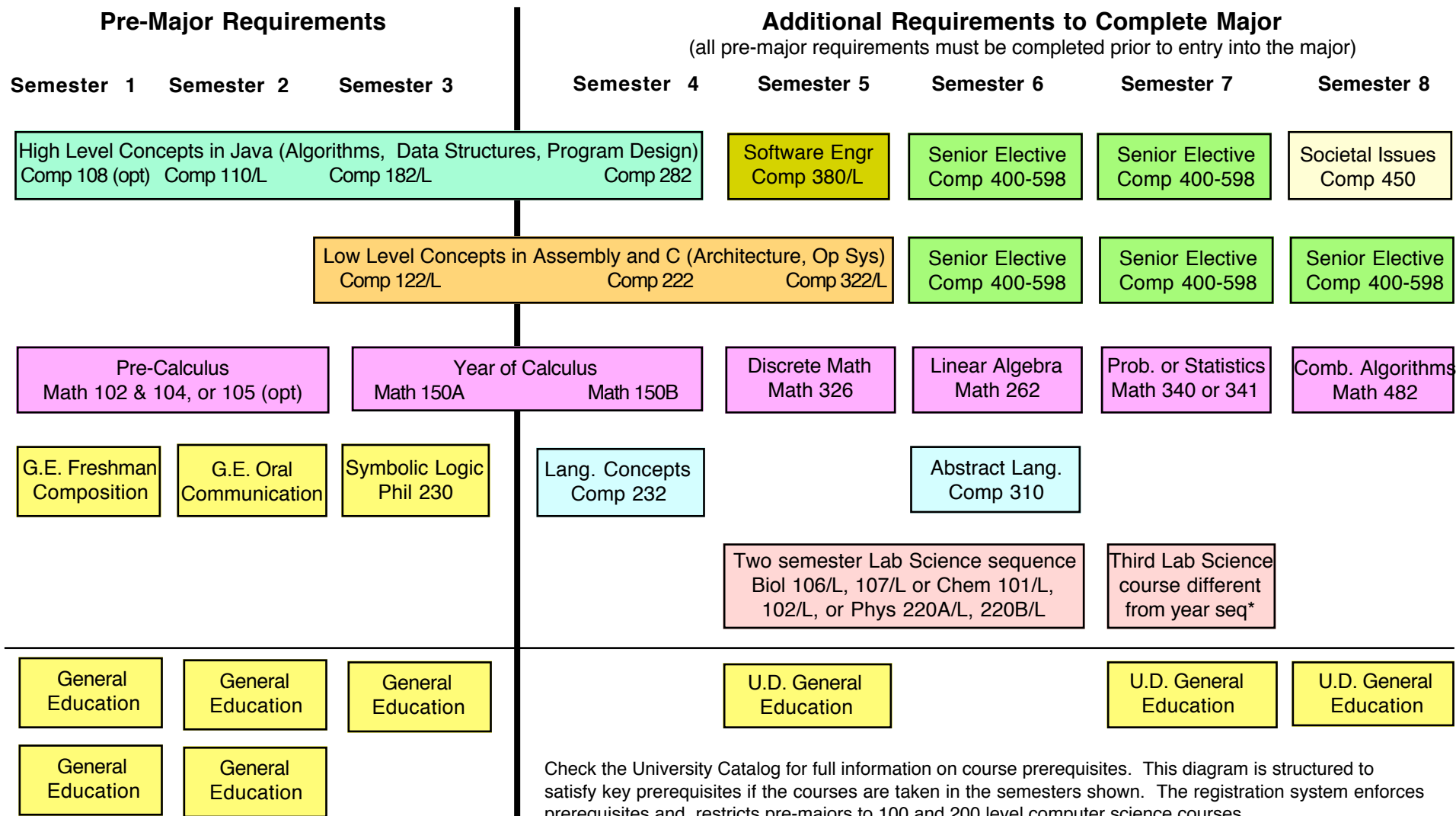


CSUN COMPUTER SCIENCE B.S. DEGREE INFORMATION

2006-2008 University Catalog (120 Unit Major, G.E. Plan R)



**Approximately 4-5 lecture sessions
(15-17 units) per semester**

Grade requirements for admission into the Computer Science major program:

1. Overall G.P.A. of 2.0 in all courses taken at CSUN
2. Grade of "C" or better in each of the seven classes in the pre-major: Comp 110/L, 122/L, 182/L, Math 150A, G.E. Freshman Comp, G.E. Oral Comm, Phil 230

Check the University Catalog for full information on course prerequisites. This diagram is structured to satisfy key prerequisites if the courses are taken in the semesters shown. The registration system enforces prerequisites and restricts pre-majors to 100 and 200 level computer science courses.

The five senior elective courses usually have Comp 322/L and/or 280/L as prerequisites plus other possible prerequisites such as Comp 232, 310 or Math 340, 341. Also, some of the senior electives form two to three semester sequences with their own prerequisite structure.

If the optional courses, Comp 108 and Math 104/105, are not taken, up to 6 additional units of free electives may be required to meet the 120 unit requirement for a degree.

* Third Lab Science course options: Biol 106/L, Chem 101/L, Phys 220A/L, Geog 101/102, Geog 103/105, Geol 101/102, Geol 110/112

Computer Science B.S. degree (120 units)

The required units are divided into:

Computer Science Core	
Lower Division	19 units
Upper Division	13 units
Mathematics	22 units
Symbolic Logic	3 units
Lab Science	12-14 units
Senior Electives in Computer Science	15 units
General Education/U.S. History/Government.	30 units
Free Elective Units	4-6 units

Lab Science Requirements (12-14 units)

Select one of the following **two semester lab science course sequences** 8-10 units

Physics 220A, 220AL, 220B, 220BL
Chemistry 101, 101L, 102, 102L
Biology 106, 106L, 107, 107L

Select an additional **third lab science course** from a field of study different

from the one selected above 4-5 units

Biology 106, 106L Geology 101, 102 (lab)
Chemistry 101, 101L Geology 110, 112 (lab)
Geography 101, 102 (lab)
Geography 103, 105 (lab)

Senior Electives in Computer Science (15 units)

Areas of emphasis:

Artificial Intelligence	Human/Computer Interface
Computer Graphics/Multimedia	Information System Design
Computer Networks and Security	Object Oriented Programming/Design
E-Commerce	Operating Systems
Embedded Applications	Software Engineering

Computer Science majors are required to take 15 units of senior electives. A student may wish to discuss their career goals with an advisor prior to selecting their senior electives. The advisor will suggest appropriate sequences of courses for the student to select from. All 400 and 500 level COMP courses (with the exception of 450, 494 and 499) and MATH 481A are pre-approved for inclusion as Senior Electives. Requests for inclusion of a 400 or 500 level course as a senior elective that does not meet the requirements stated above must be approved by the student's advisor and the Department Chair prior to enrollment in the course.

See reverse side for additional information

rev 6/13/06

A First Year Sequence for Freshmen Needing Developmental Courses (These courses would be taken prior to starting the four year plan appearing on the other side. Check with your academic advisor regarding the proper course sequence.)

Semester 1:

Developmental Math or Math 102
Developmental English
G.E. course
G.E. course

Semester 2:

Developmental Math or Math 102 or 104
Developmental English or Freshman Comp. (G.E.)
G.E. course
G.E. course

Grade Requirements for Undergraduate Courses in the Major (Current catalog year course prerequisite requirements apply to all major course work not yet completed; major degree requirements are determined by the catalog year of the major; always apply the higher of the two standards.)

A. Transfer courses

"C" or better for all transfer courses

B. Courses taken at CSUN - rules depend on the academic year of the University Catalog of your major [1989-1996 means from August 1989 through July 1996]; consult with the Dept Office if your catalog year is not listed; although every attempt has been made to accurately represent the following information, your responsibility is to follow the rules that appear in the appropriate University Catalog for the year for your major and in your ADP report.

- 1989-1996 Catalog years:** "C-" or better in all prerequisite courses required by the major ("C" or better in MATH 150A) and "D-" or better in all non-prerequisite courses required by the major except for Concentrated Studies Package courses where "C-" or better is required
- 1996-2000 Catalog years:** "C-" or better in all prerequisite courses required by the major ("C" or better in prerequisite math courses) and "D-" or better in all non-prerequisite courses required by the major except for Concentrated Studies Package courses where "C-" or better is required
- 2000-2002 Catalog years:** "C-" or better in all courses required by the major ("C" or better in prerequisite math courses)
- 2002-2003 Catalog year:** "C-" or better in all courses required by the major ("C" or better in prerequisite math courses); 2.0 overall GPA in for the eight courses required by the pre-major (the G.E. A.1 and A.4 courses are part of the pre-major but not part of the major)
- 2003-2006 Catalog years:** "C" or better in each of the eight courses required by the pre-major (this includes the G.E. A.1 and A.4 courses) and "C-" or better in all remaining courses required by the major ("C" or better in prerequisite math courses)
- 2006-2008 Catalog years:** Same grade requirements as 2003-2006 but major is reduced to 120 units when combined with G.E. Plan R and pre-major consists of seven courses

C. Overall GPA requirements (both to stay in good academic standing and to graduate)

- 2.0 or higher overall GPA for all courses taken at CSUN
- 2.0 or higher overall GPA for all courses taken (combination of both CSUN and transfer work)
- 2.0 or higher overall GPA for all upper division courses required by the major